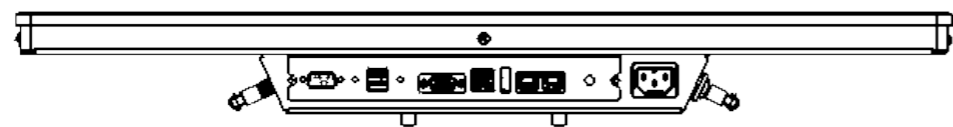
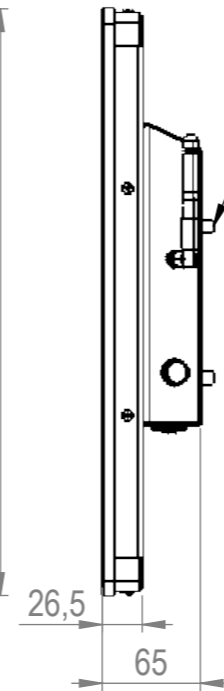
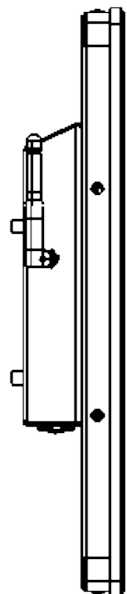
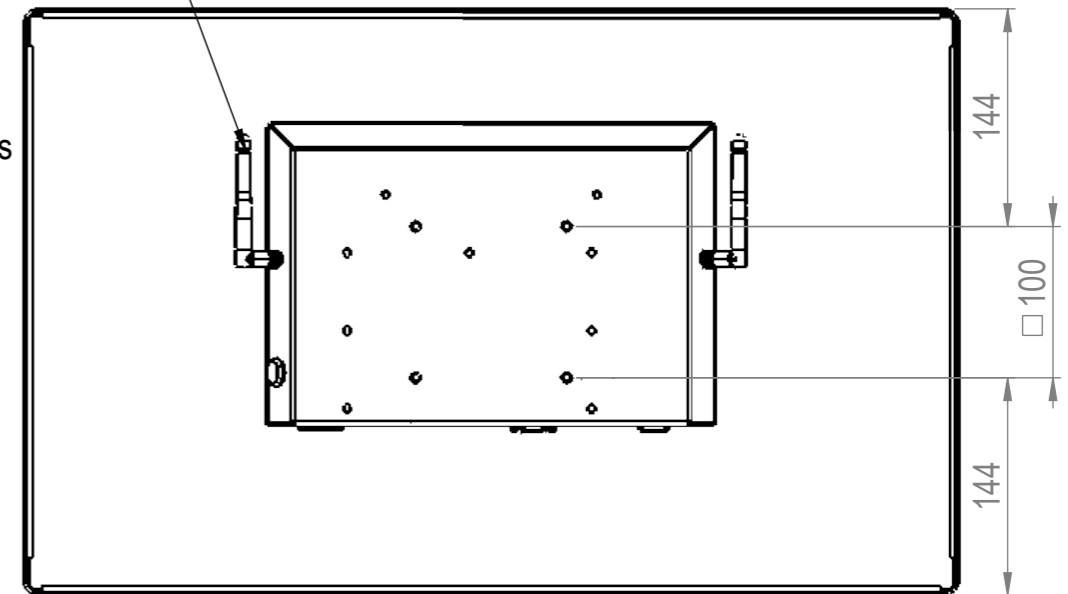
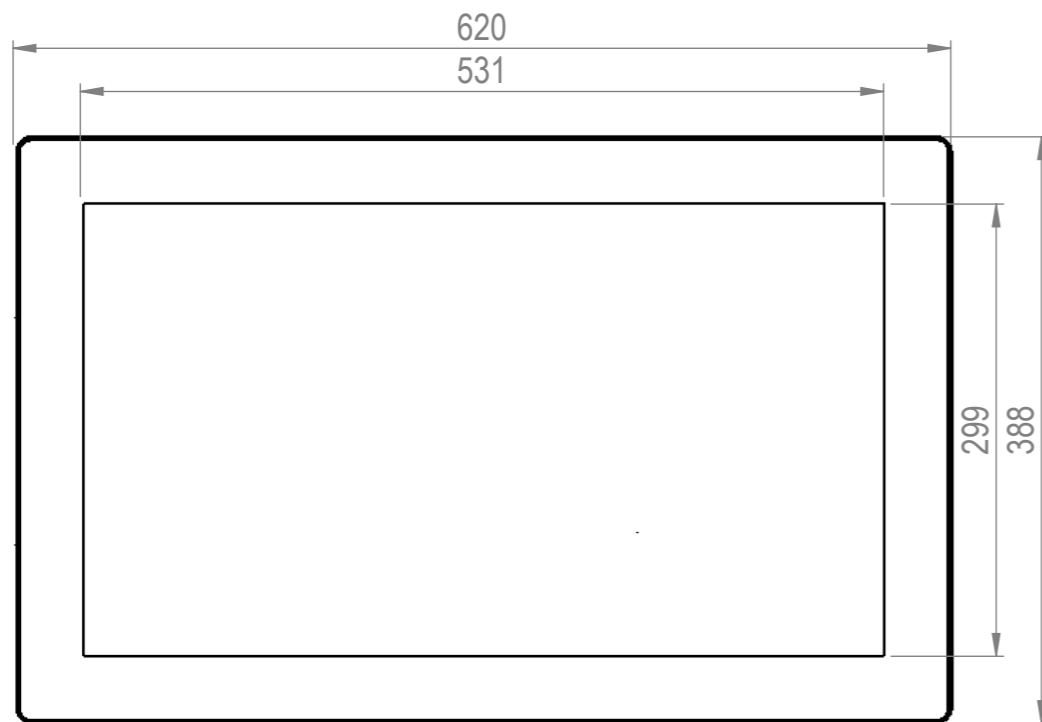
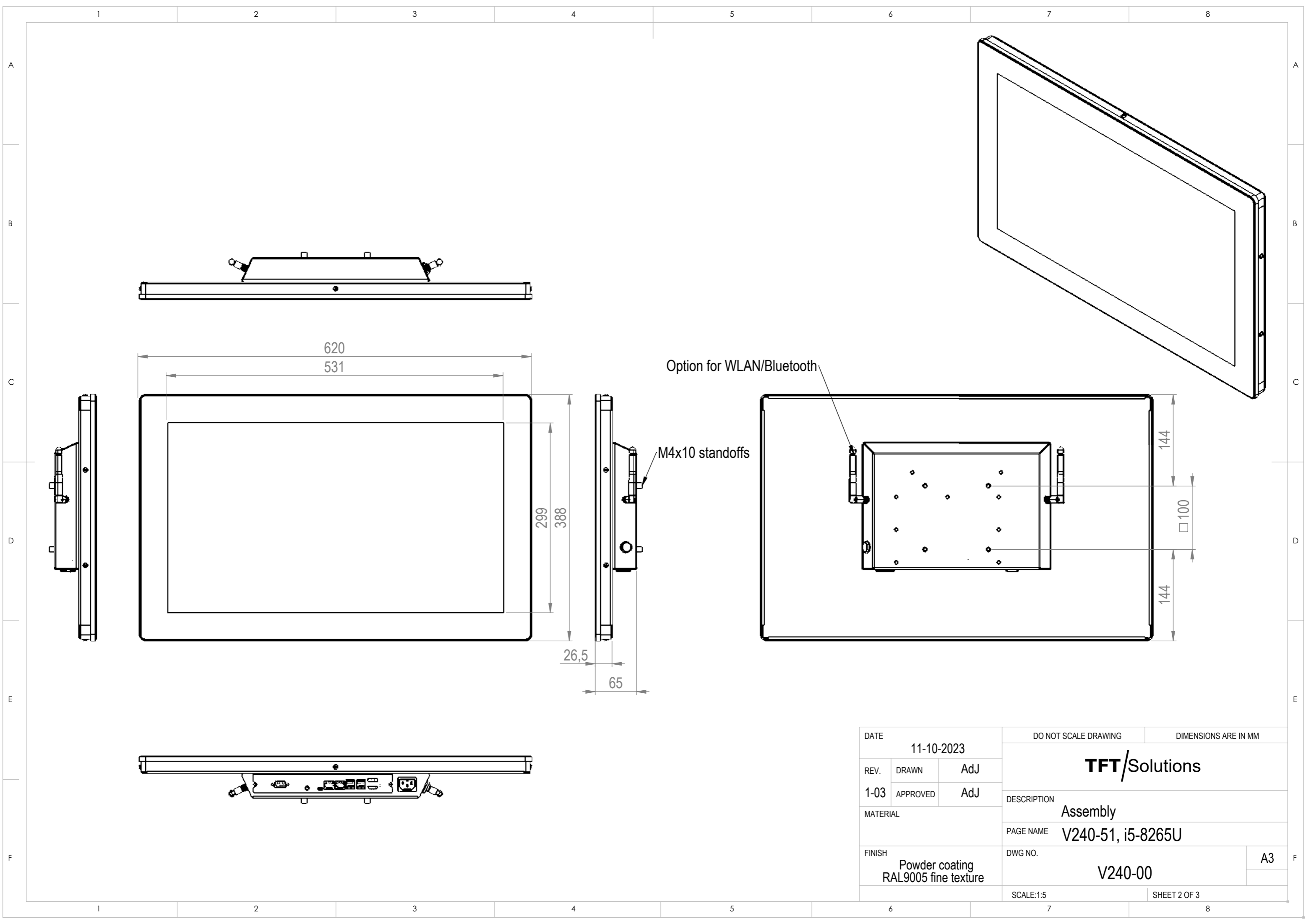


Option for WLAN/Bluetooth

M4x10 standoffs



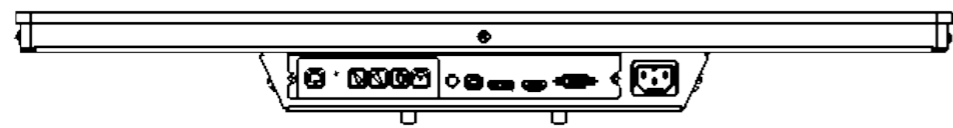
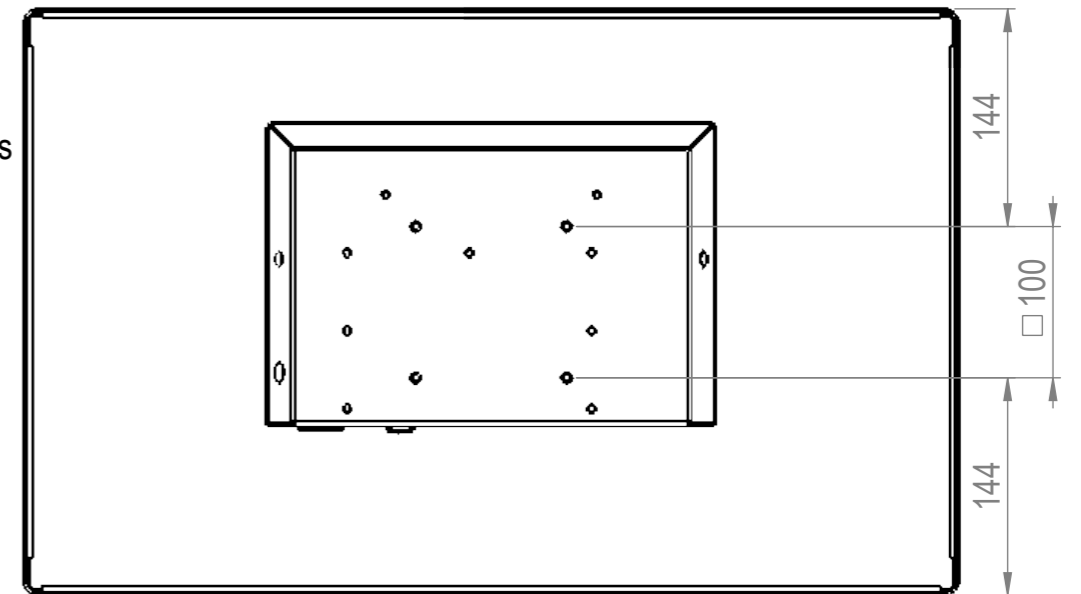
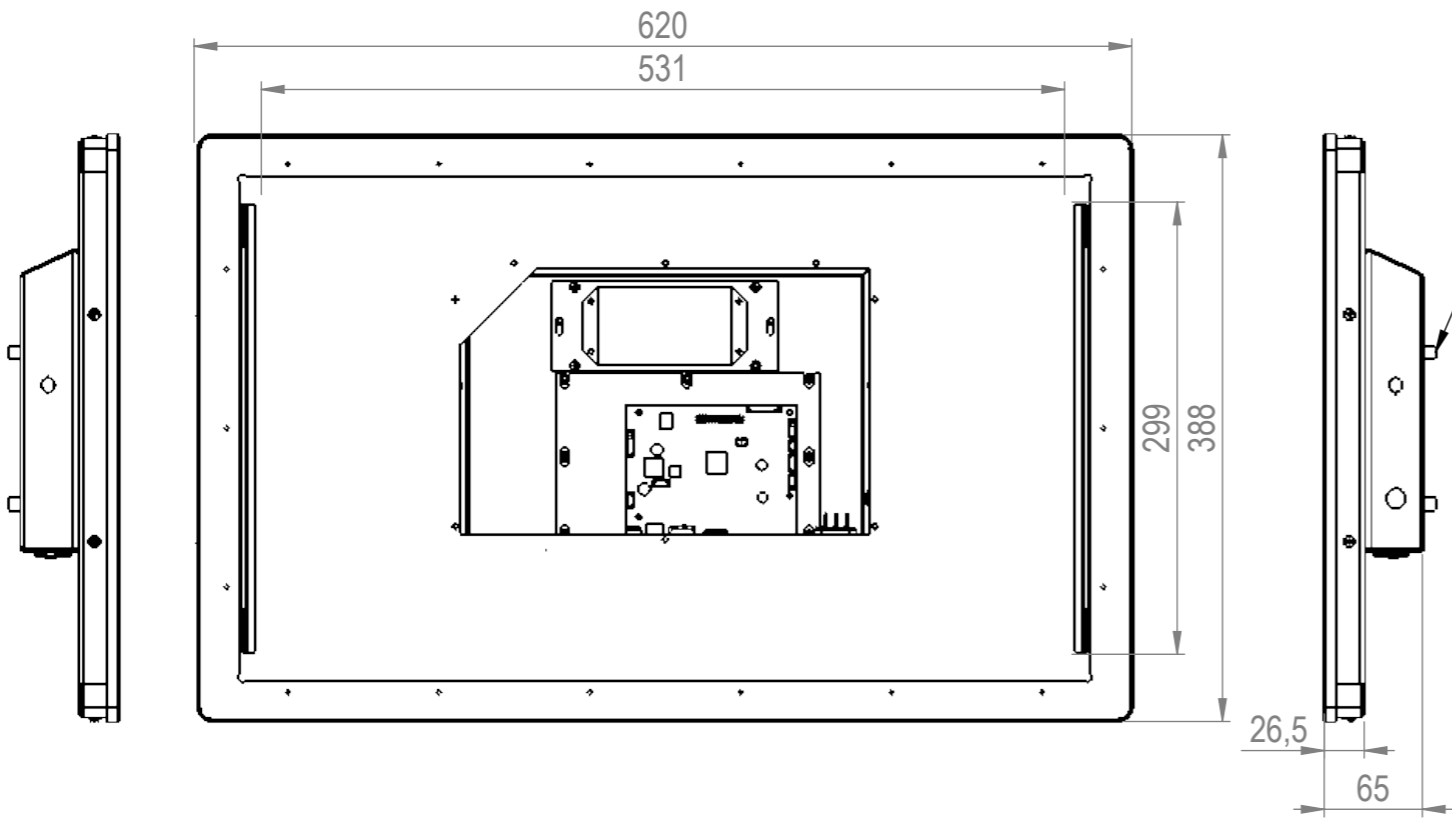
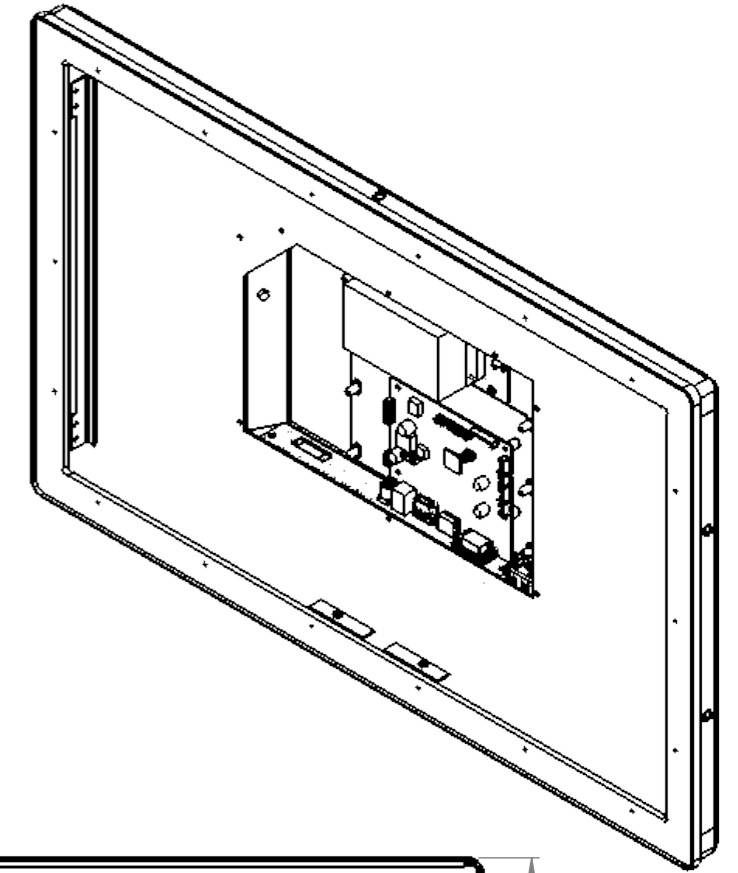
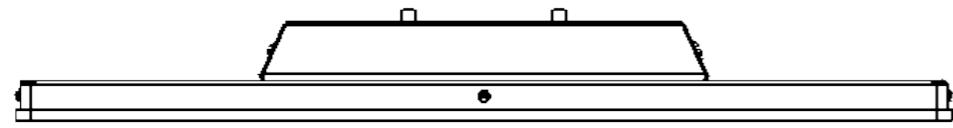
DATE		11-10-2023		DO NOT SCALE DRAWING		DIMENSIONS ARE IN MM	
REV.	DRAWN	AdJ		TFT/Solutions			
1-03	APPROVED	AdJ					
MATERIAL				DESCRIPTION			
				Assembly			
FINISH				PAGE NAME			
Powder coating RAL9005 fine texture				V240-C4, Celeron J6412			
				DWG NO.		A3	
				V240-00			
				SCALE:1:5		SHEET 1 OF 3	



Option for WLAN/Bluetooth

M4x10 standoffs

DATE		11-10-2023		DO NOT SCALE DRAWING		DIMENSIONS ARE IN MM	
REV.	DRAWN	AdJ		TFT/Solutions			
1-03	APPROVED	AdJ					
MATERIAL				DESCRIPTION			
				Assembly			
FINISH				PAGE NAME			
Powder coating RAL9005 fine texture				V240-51, i5-8265U			
				DWG NO.		A3	
				SCALE:1:5		SHEET 2 OF 3	
				V240-00			



DATE		11-10-2023		DO NOT SCALE DRAWING		DIMENSIONS ARE IN MM	
REV.	DRAWN	AdJ		TFT/Solutions			
1-03	APPROVED	AdJ					
MATERIAL				DESCRIPTION			
				Assembly			
FINISH				PAGE NAME			
Powder coating RAL9005 fine texture				V240-MON			
				DWG NO.		A3	
				V240-00			
				SCALE:1:5		SHEET 3 OF 3	